

# User Guide for WM-WB3200

## Chapter 1 Brief Introduction

### 1: What is the interactive whiteboard system?

Interactive Whiteboard system is a positioning system based on the latest infrared technology .Use this system you can operate projector and computer easier and achieve more excellent presentation effects.

Having Interactive whiteboard system means you not only have stronger functions than mouse, touch screen and electronic whiteboard, more important you have the more Man-machine communication opportunities in the presentation: Use “interactive whiteboard” you can almost neglect the projector , computer system., the operation fit the natural communication custom. Use interactive whiteboard system will overcome the defects of the Speakers’s just sit before the computer which lacks of interactive communications.

### 2: System requirements

#### 1、 hardware requirements

- CPU : based on X86 processor , above pentium166
- Memory: 64 MB RAM(recommend 128 MB RAM)
- Hardware: free space

#### 2、 software requirements

98/2000/XP/2003/vista/win7 operating system

#### 3、 natural environment

Should avoid the sunshine or other strong projectivity light, especially you shouldn’t make a direct projection to screen; you can’t block the light path from the pen tip to the signal receiver .Generally, you should’t block the light of the projector.

### 3: Product component list

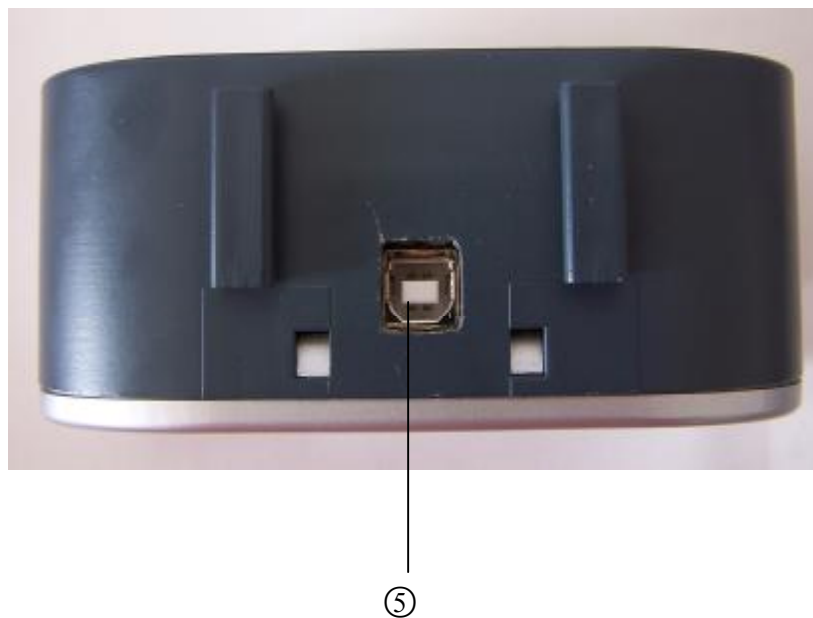
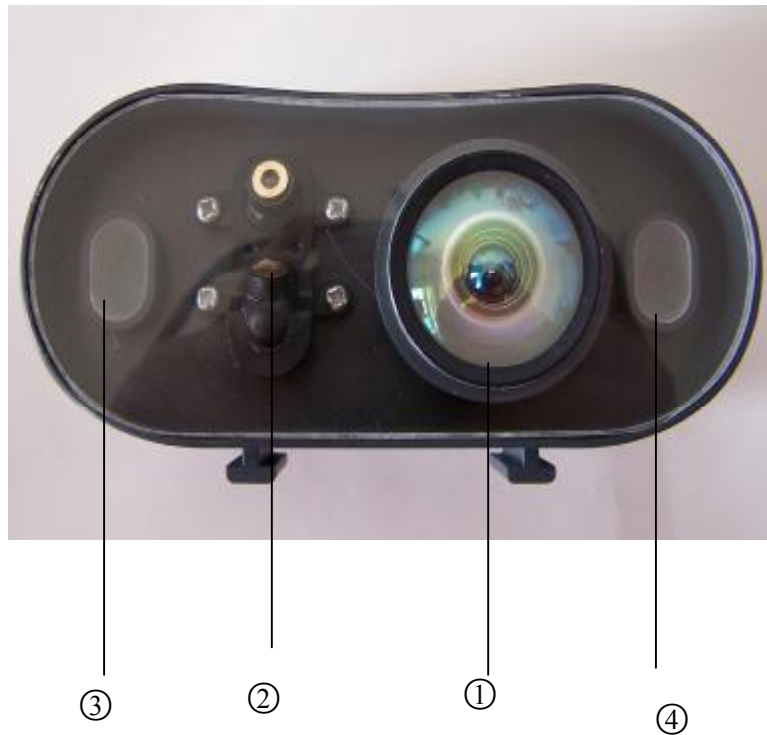
Please check if the package is same with the schedule list of items, if lack of components or components are damaged, please contact local distributors or our company.

- 1、 Signal receiver
- 2、 Interactive writing pen
- 3、 10m USB line
- 4、 Wall Mount Steel Support
- 5、 Pointer (Optional)
- 6、 Disk

## Chapter 2 Product Components Introduction

### 1、Signal receiver

Signal receiver is a device which can receive the signal from the indicating device(interactive writing pen、pointer) and identify the location of indicating device, and transmit the location and operating information to computer .





⑥

① Signal receiving area: This is the front receiving area of the signal receiver, where the signal is received by interactive writing pen or pointer

② Laser: This is the laser which can be used to determine the scope of available screen, it's red when it works.

③ Signal indicator light: This is the signal indicator light, it's green when it works

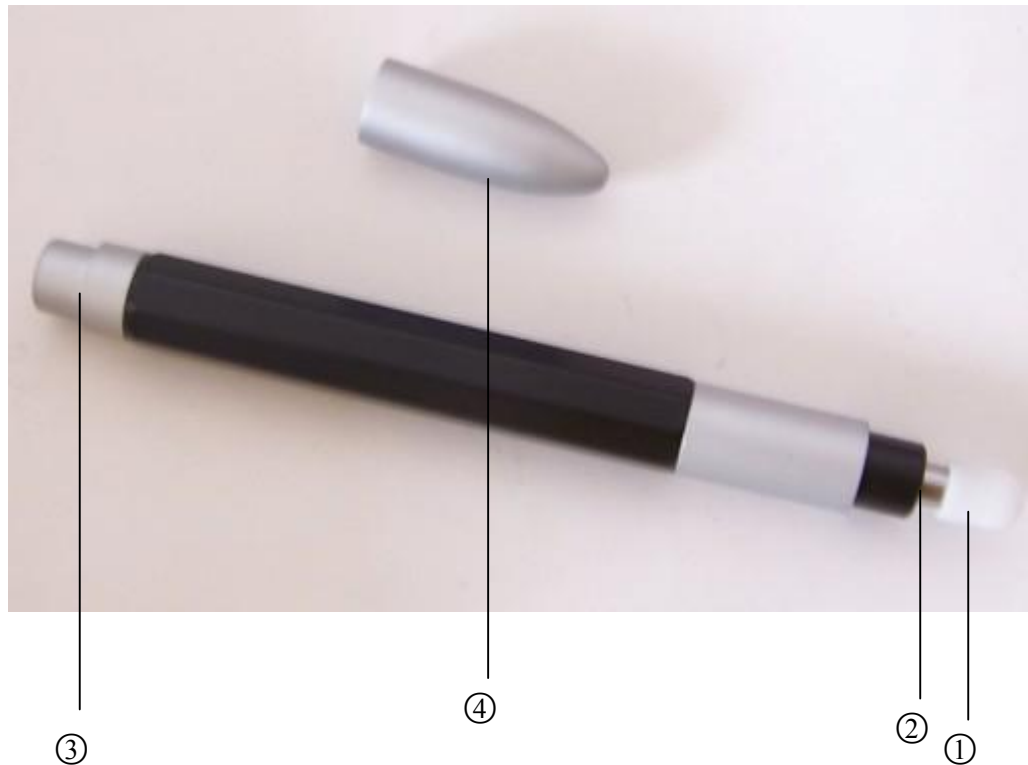
④ Power indicator light: This is the power indicator light, it's red when it works.

⑤ USB interface: This is the USB interface, attention: This is square-mouth.

⑥ Laser switch: This is touch switch

## 2、 Interactive writing pen

Replace the mouse to write and operate on the screen



① Pen tip: There is a signal indicator LED, it will emit light signal when signal is output

② Micro switch: when the pen tip is given small pressure, signal indicator light will emit light signal, that is micro switch is on , the pen can write

③ The back cover of the pen body: unscrew the back cover and put the batteries into the pen body, it can be used

④ Pen cap: After use it , cover the cap to avoid throwing on the ground

## 3、 Connection Line

USB line:Used to connect the receiver and computer after fixing the signal receiver.

## 4、 Wall Mount Steel Support

Pleaser refer to instruction.

## 5、Pointer

### 5.1 Pointer body

It is used to connect the telescopic pointer, most of the operation achieves by the press button on the body of the pointer .



- ① “L” key: Press and release the “L” key once equals click the left key of the mouse in the pen tip, long press the “L”key equals click the right key of the mouse in the pen tip.
- ② Back cover of the pen body: unscrew the back cover, put the batteries and then it can be used.
- ③ Interface: It’s threaded interface used to connect the telescopic pointer

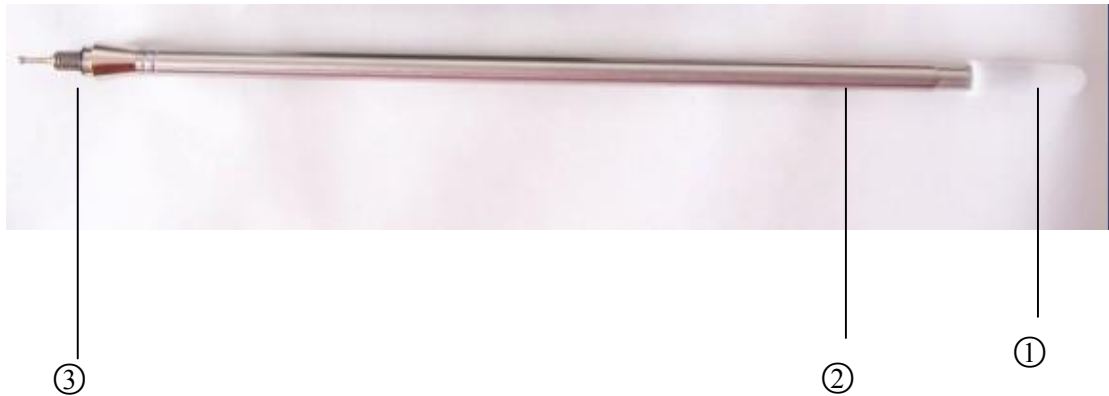
#### How to use the pointer:

| Interactive writing pen operation | Operating methods   | Mouse function                        |
|-----------------------------------|---|---------------------------------------|
| once “L”key click                 | Press and release “L”key once   | Click the left key of the mouse       |
| twice “L”key click                | Continuous press and release the “L”key twice (interval not too long) | Click the left key of the mouse twice |
| long press “L”key                 | Press the “L”key for at least 2 seconds                               | Click the right key of the mouse once |
| drag                              | Press “L”key, move the  | The operation of the drag             |

|  |   |   |
|--|---|---|
|  | interactive writing pen<br>which can achieve dragging | of the left and right key of<br>the mouse |
|--|---|---|

## 5.2 Telescopic rod

The connecting use of the Telescopic rod and pointer body is good for operating on the screen.



①Signal indicator light

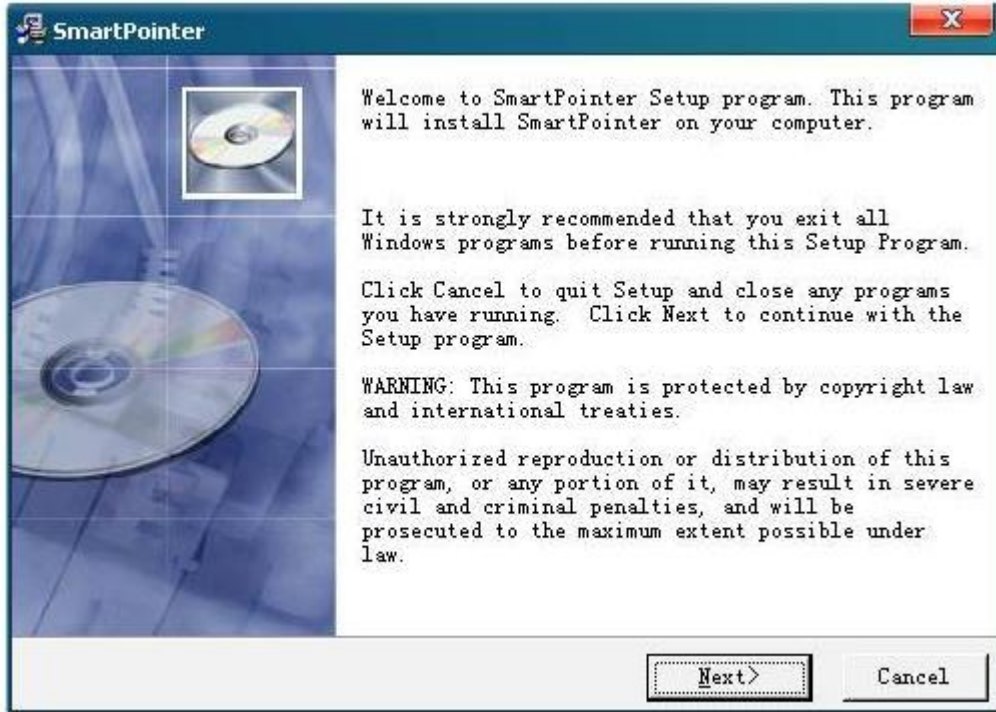
②Rod body: retractable;

③Rod knob: correctly insert the rod into the body of the pointer, rotate it to fix the teaching rod

## 6、 Software installation

(1) Insert the disk, double click the smartpointerinstall.exe program, pop up the interface below

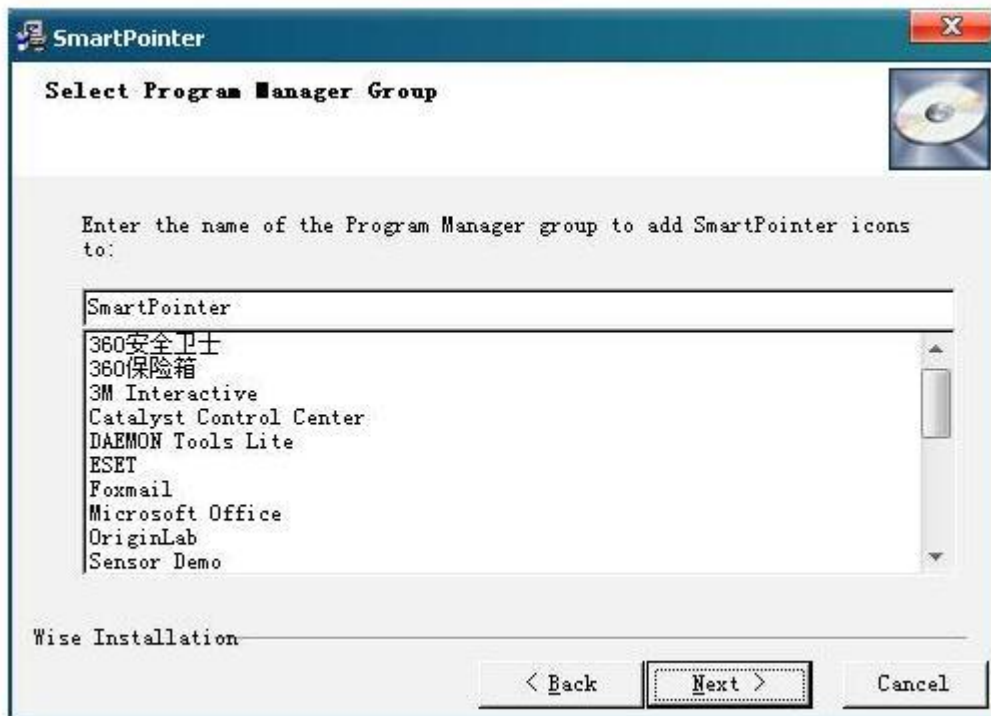




Click **【Next】** to enter “Select Destination Directory”, selecting the link, where you can choose installation directory, see below:



Choose the file installation location , then click **【Next】**

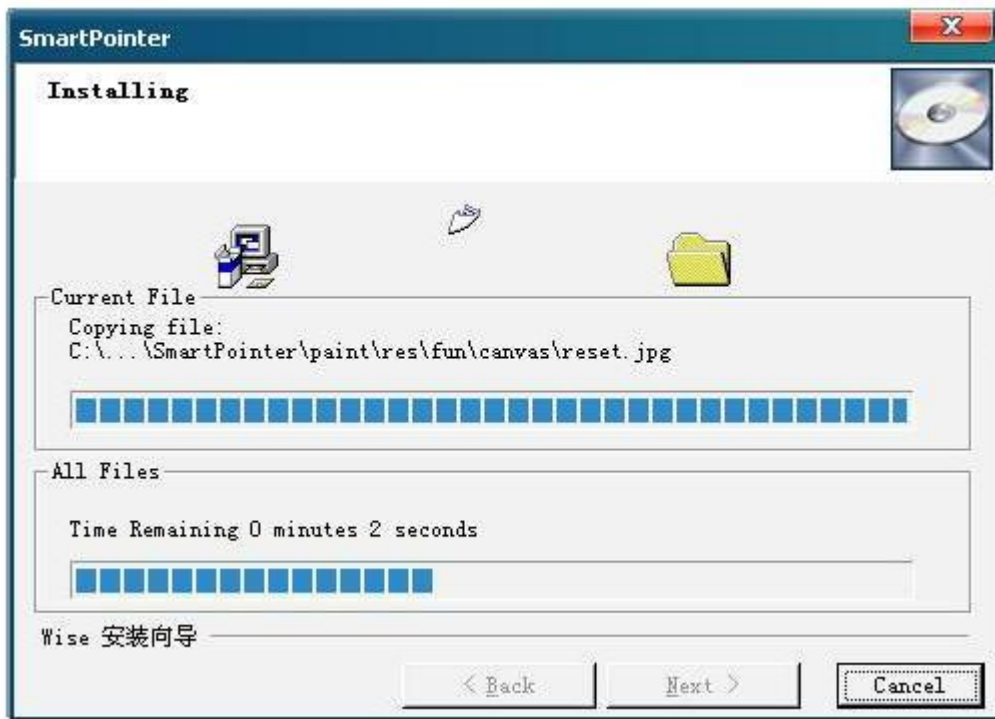


Click **【Next】** to start the installation:





Confirm installation information, click next to start the installation process



You can see successful installation interface after finishing the installation



Click finish, end installation process.

## Chapter 3 How to use WM-WB3200 system

### 1、WM-WB3200 installation method , system requirements and notes

Suspended ceiling installation is mainly used for fixed long-term use, the advantage of which is that once installation and debug is finished, if not move the projector, we don't need to adjust the receiver's location and elevation, and we don't need to conduct coordinate sampling again in the later use .

### 2、Start settings


#### 2.1、Start settings

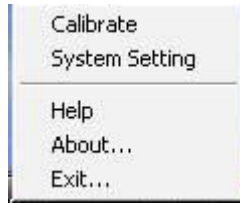
Properly connected and turn on your computer and projector, adjust the projector to the wall or projector screen on the screen shows normal. After installation is complete, no need to restart your computer, in the WINDOWS the [Start] menu of the program directory, select the generated **【SmartPointer】** directory **【SmartPointer】** option or

double-click the shortcut icon  on the desktop , specific demonstration operation is shown below:



#### 2.2、Interactive whiteboard system settings


Use the left key of the mouse to click the small icon  in the system taskbar of the right corner of the desktop, the menu will pop up, as follows:

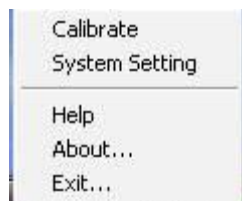


choose system settings, you can set up the function and interface

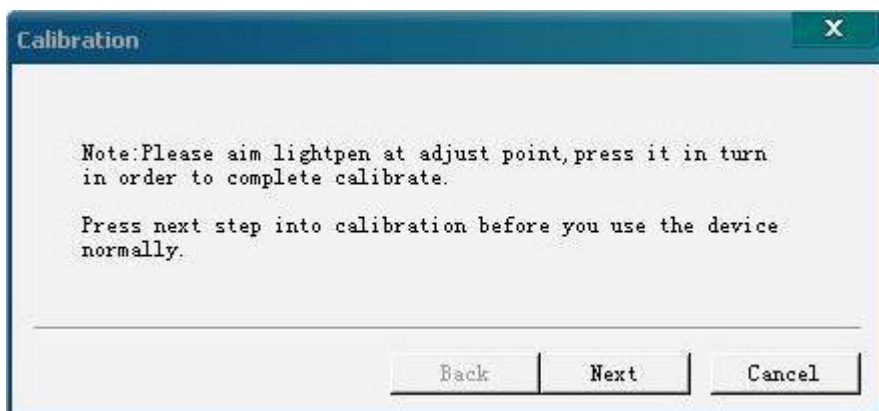
- (1) language setting: choose language setting, you can choose the language you need
- (2) system setting: choose system setting, you can change exposure value, set if you need program and PPT automatic run or not
- (3) positioning point settings: choose positioning point settings, you can set the numbers of the positioning point.

### 3、 Positioning Calibration

The purpose for coordinates sampling is to make projector Genius frame of axes correspond to computer frame of axes, projector Genius can recognize the location of the Opto-Electrical writing pen on the screen, which makes the pen control the mouse pointer correctly. Left click the icon  in the system taskbar of the right corner of



the desktop, the menu will pop up, choose Calibrate, the picture below will pop up :




Click **【Next】** to enter manually positioning the environment, as shown below will appear on the screen positioning of sample icon:




Click  one by one, will appear in the middle of the screen taskbar, click ok and finish positioning operation.

#### 4、 Other menu introduction


##### (1) Help

Use mouse or interactive writing pen left click the icon  on the lower right of the taskbar, choose “help”, you can open the help file of the system.


##### (2)About

Use mouse or interactive writing pen left click the icon  on the lower right of the taskbar, choose “about”, the copyright and other basic information will display.

##### (3) Exit

Use mouse or interactive writing pen left click the icon  on the lower right of the taskbar, choose “exit”, you can exit this software.

## SmarterPointer Operating

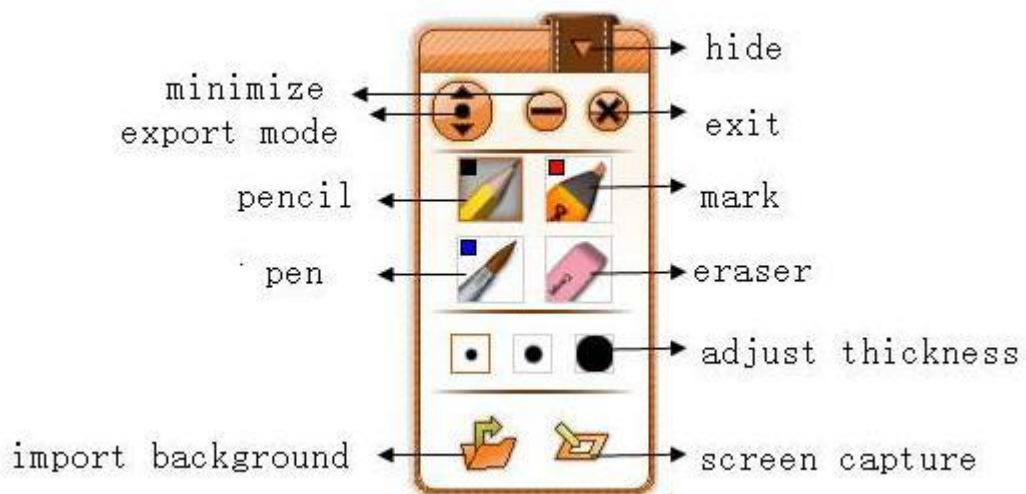
After setting up the software of Smartpointer,one shortcut menu  will come ture on the desktop and a list of [Smart Pointer] will be created in [start].Now ,you have two ways to start-up whiteboard:

- 1) click the shortcut menu  twice
- 2) open the [Start] of windows to All Programs to Smart Pointer to Paint you enter the whiteboard as following picture:





### Basic Function Menu

After you start up Smartpointer,you can see a Basic Function menu on the left of the screen,as flowing picture:



**Basic Function Menu**

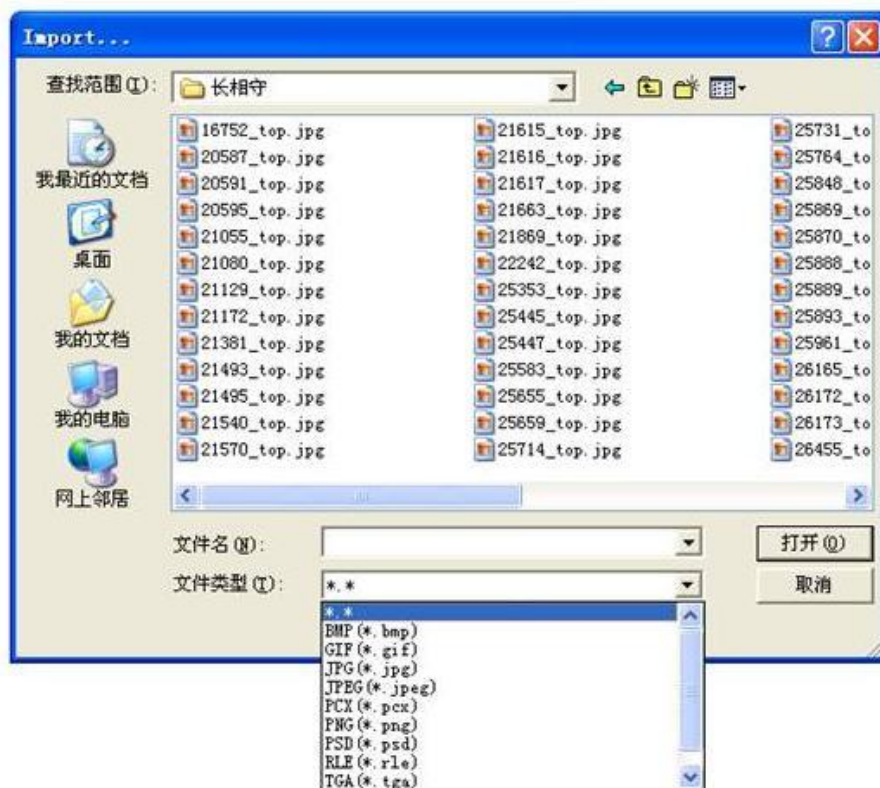
- 1) **Hide:** Click the hidden icon to receive hiding the menu, in order to avoid occupying the use of regional the menu area and go on a wider range of operating conveniently.
- 2) **Export Mode:** The menu defaults to the basic functions of the menu, and appears on the screen above the left side. When you click the button  on this map, which can expand the menu, at the same time get an extended Function Menu. As shown in the following in the "extensions menu".
- 3) **Minimize:** Click the minimize icon on the menu, and return to windows interface.
- 4) **Exit:** Click on the menu exit button in the upper right corner, and obtain the following interface that you can click  on exit Whiteboard Procedure.



- 5) **Pencil:** Click the [pencil] icon on the toolbar, you can write on-board or in Microsoft Office Word, Excel, PowerPoint document image processing functions and so on, or go on writing in the image editing mode of software, annotations, and painting, etc. Use a pencil to write neatly with smooth features which is more suitable for letters, numbers and common words, at this time it only has the default color--- black, and if you press the button twice, a menu will pop up ,and you can choose many other colors.and its thickness has only three kinds.
- 6) **Pen:** According to characteristics of a writing brush to develop a writing effect, which wonderful shows the art of brush writing and is generally suitable for display brush effects, titles, and calligraphy and painting. Click the [pen] icon on the toolbar, you can write on-board or in Microsoft Office Word, Excel, PowerPoint document image processing functions and so on, at this

time it only has the default color--- blue, and if you press the button twice,a menu will pop up ,and you can choose many other colors, also its thickness has only three kinds.


- 7) **Mark:** Mark is mainly to highlight the effect of transparency and appear subtle beauty, used for the transparency of the image processing, which is suitable for ink, coating and others. At this time it only has the default color---red, and if you press the button twice,a menu will pop up ,and you can choose many other colors ,also its thickness has only three kinds.
- 8) **Eraser:** Click the eraser button to random erase operation before, and adjustment button can adjust the size of the eraser; Double-click the eraser button, it erases the part of circle.
- 9) **Adjust thickness:** This function can adjust all the thickness of lines and graphics in the Whiteboard, you can adjust according to the needs of the different line weight adjustment, it has only three kinds of adjustment model.
- 10) **Import background:** After opening the whiteboard software, the system defaults white. Clicking on this button you can choose any one from BMP, GIF, JPG and other formats of pictures as the background of white board, that riches your whiteboard. To do as shown below:

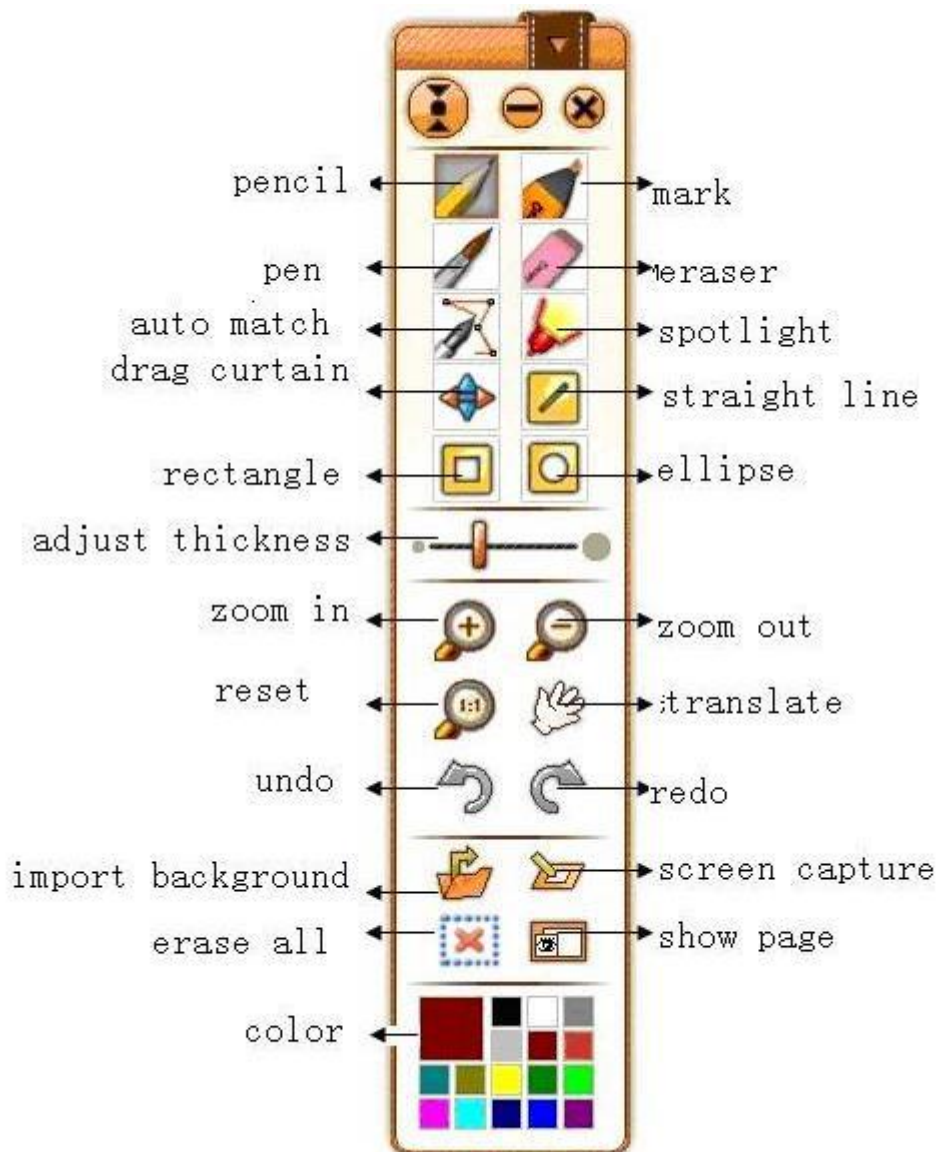


11) **Screen Capture:** Switch to windows as a background of the use of whiteboard.

**NOTES:** You just click the space on the menu, it will move.

### Expansion Function Menu

When you click icon  on the basic function menu, we can open more powerful expansion function menu, you can see details as follows:



### Expansion Function Menu

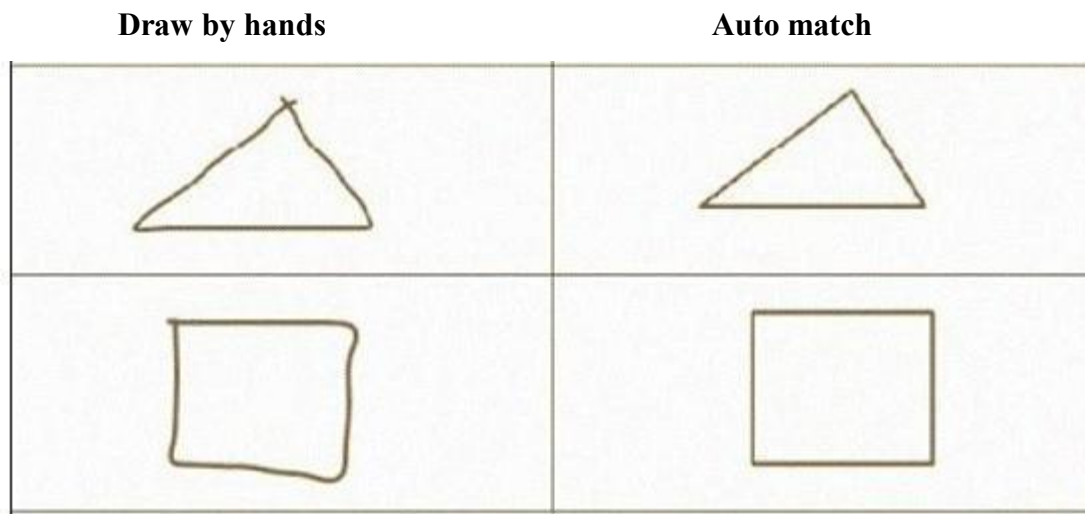
1) **pencil:** In this mode, the function of pencil is same with the state of basic function menu, and you can set up the writing colour of the pencil by choosing any colour from “colour “ function menu; in addition, you can click “thickness adjustment”,so you have much choice as to the writing thickness.



**2)pen:** In this mode, the function of brush pen is same with the state of fuction of basic menu,you can set up the writing colour of the brush pen by choosing any colour from “colour “ function menu; in addition, you can click “thickness adjustment”,so you have much choice as to the writing thickness.

**3)mark:** In this mode, the fuction of mark is same with the state of basic function menu, you can set up the writing colour of the Fluorescence pen by choosing any colour from “colour “ function menu; in addition,you can click “thickness adjustment”,so you have much choice as to the writing thickness.


**4) auto match:**using auto match can help users conduct deformation drawing, you can draw any defromation , easy and convenient to operate , you can adjust the colour and thickness , as follows :

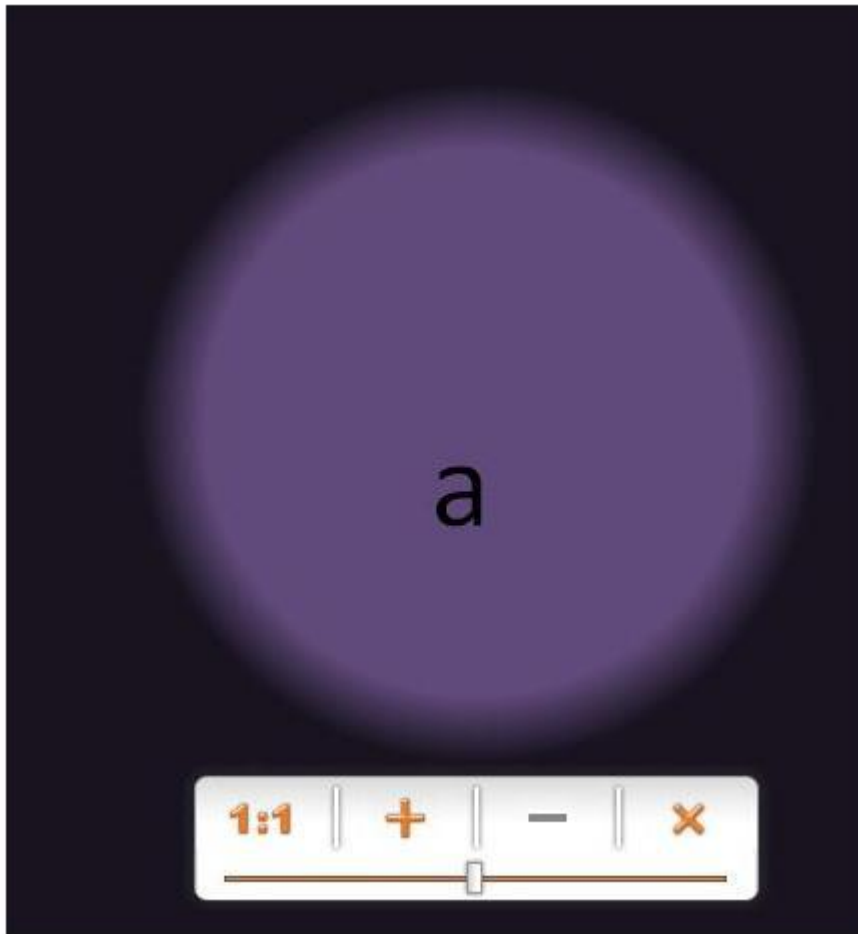


**5)eraser :** click the eraser button you can eras any operation before, you can adjust the size of the eraser by adjusting the thickness button;double click the eraser button, you can conduct selection erasing , and you can conduct selction delete to the writing of whiteboard.


**6)spotlight:** choosing spotlight menu can stand out your speech,our spotlight comes with magnifying glass ,which can stand out your point strongly.In the spotlight mode, you can stand out different area by dragging the spotlight,you can set up the size of the spotlight and multiple of the magnifying glass.You can set up the magnifying


glass by clicking the icon  , and you can

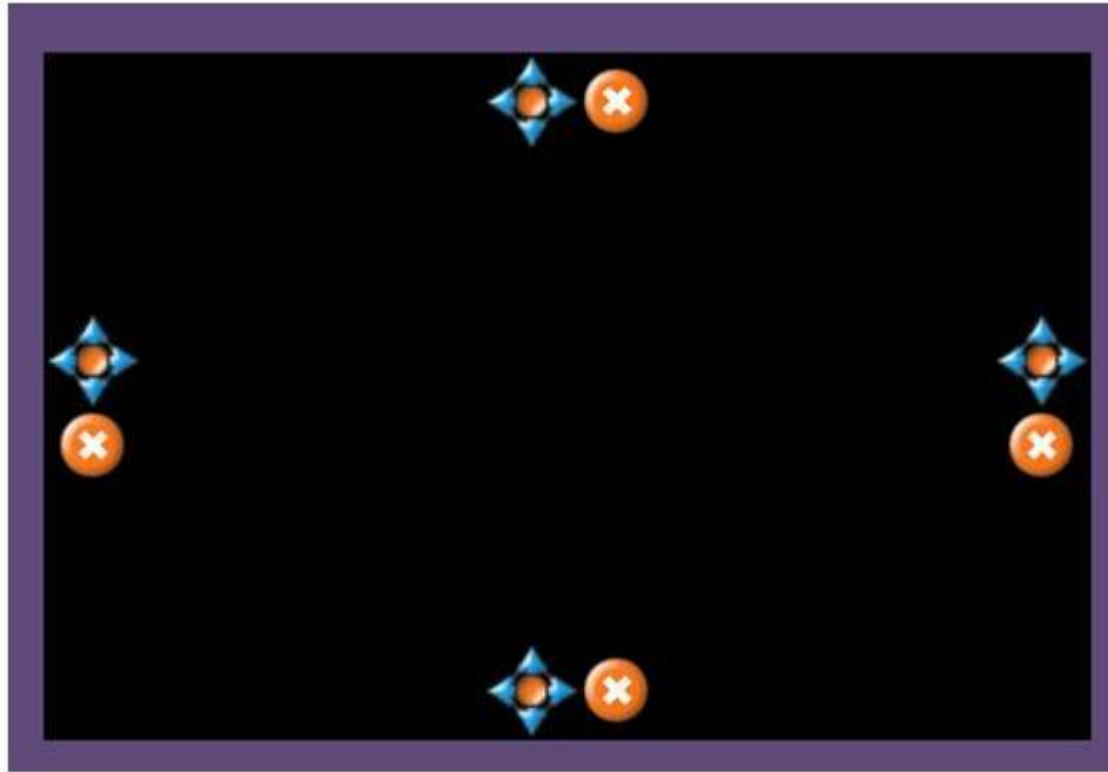
set up the size of the spotlight by clicking a row of moving barcode. Click  icon, you can exit, as follows:



7)**drag curtain:** choose drag curtain, you can conduct covering and opening , which can make targeted information stand out.It is easy for teaching

presentation.You can adjust the size of the curtain,click  any button of the four sides of the curtain, which can conduct the answers known one by one .And you can

exit drag curtain by pressing the coin ,as following picture:



**8)straight line:** click [straight line] icon,you can use beeline tool to draw on the writing board or on the file which has object-dealing function such as Microsoft Office Word、 Excel、 PowerPoint,or using Image editing software . Meanwhile, you can set up the thickness and colour.

**9)ellipse:** click the[ellipse] icon ,after you choose the circle icon, you can choose a place and drag on the sreen, in which process, you can transform the size and shape of the circle .In addtion, you can set up the thickness and colour .

**10)adjust thickness:** [adjust thickness] in this mode is the same with basic function menu, but it has more adjustment area than in the basic function mode , which is convenient for users .

**11)rectangle:**click [rectangle] icon, after you choose rectangular icon you can click a place and drag on the screen , in which process you can transform the size and the shape , and we can set up the thickness and colour.

**12)zoom in:** click this button, you can see a magnifying glass on the screen. click the magnifying glass, you can enlarge the contents according to your requirements, which make your speech and presentation easy.

**13)zoom out :** achieve the contrary function of the “zoom in”, click this button, you can see a narrow mirror.click narrow mirror, you can narrow the contents ,which can save the space .

**14)reset:**when you conduct enlarging or narrow,if you want to return to the original interface ,press this button.

**15)translate:** After achieving enlarging function ,press this button you can see a palm icon on the screen, you can move enlarged graph.

**16)import background:** It is the same with the use method of basic function menu.

**17)screen capture:** It is the same with the use method of basic function menu.

**18)erase all:**erase all writing on the screen

**19)undo/redo:** revoke and recover the last operation

**20)Colour:**click this button,you can set up colour of pen and three standard graph, which enriches the users choice.

**21)show page :** click this button, you can see a resource manager interface on the right of the screen, resources manager as follows, you can set up the page of the whiteboard.

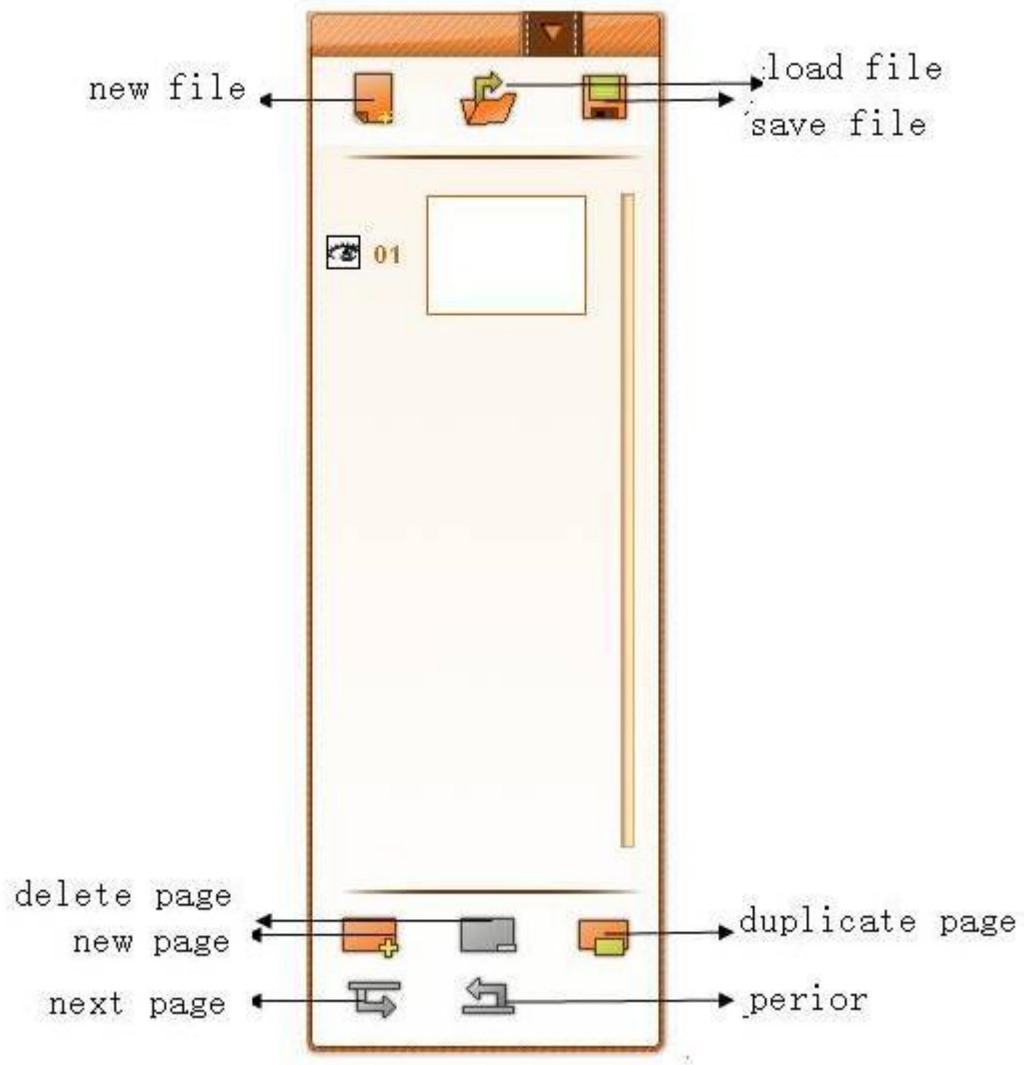
**NOTES:** just click the blank of the menu,you can move the menu, if you want to

return to the basic function menu, you just need to click button.



## Resources Manager

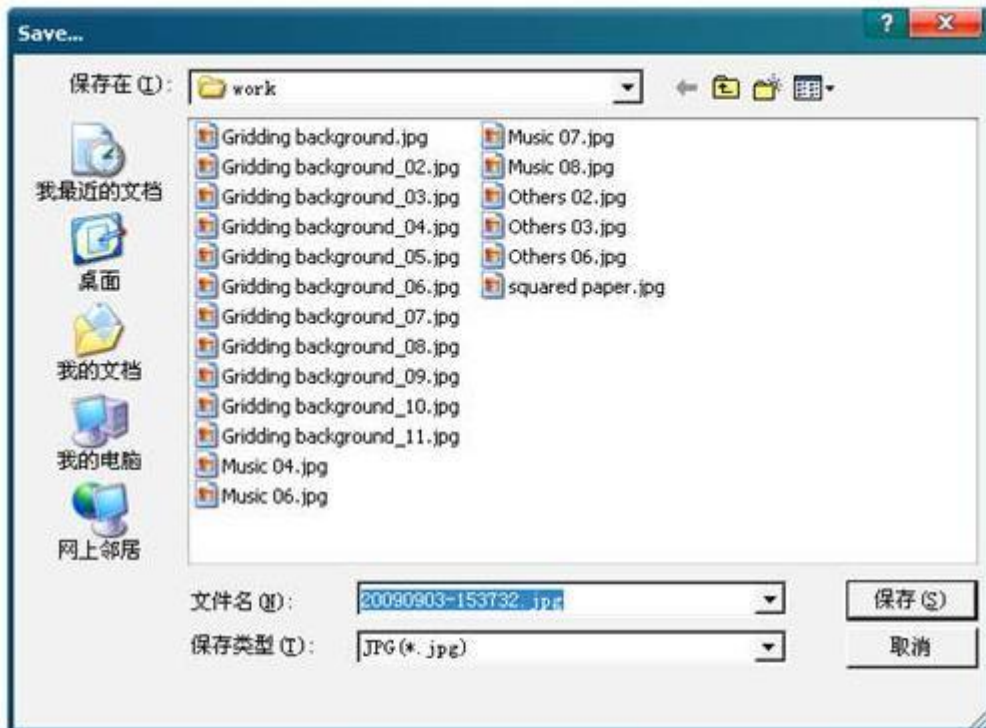
Click “ resources manager “ in the expansion function menu, you can see a resources manager interface in the right of the screen, as follows:



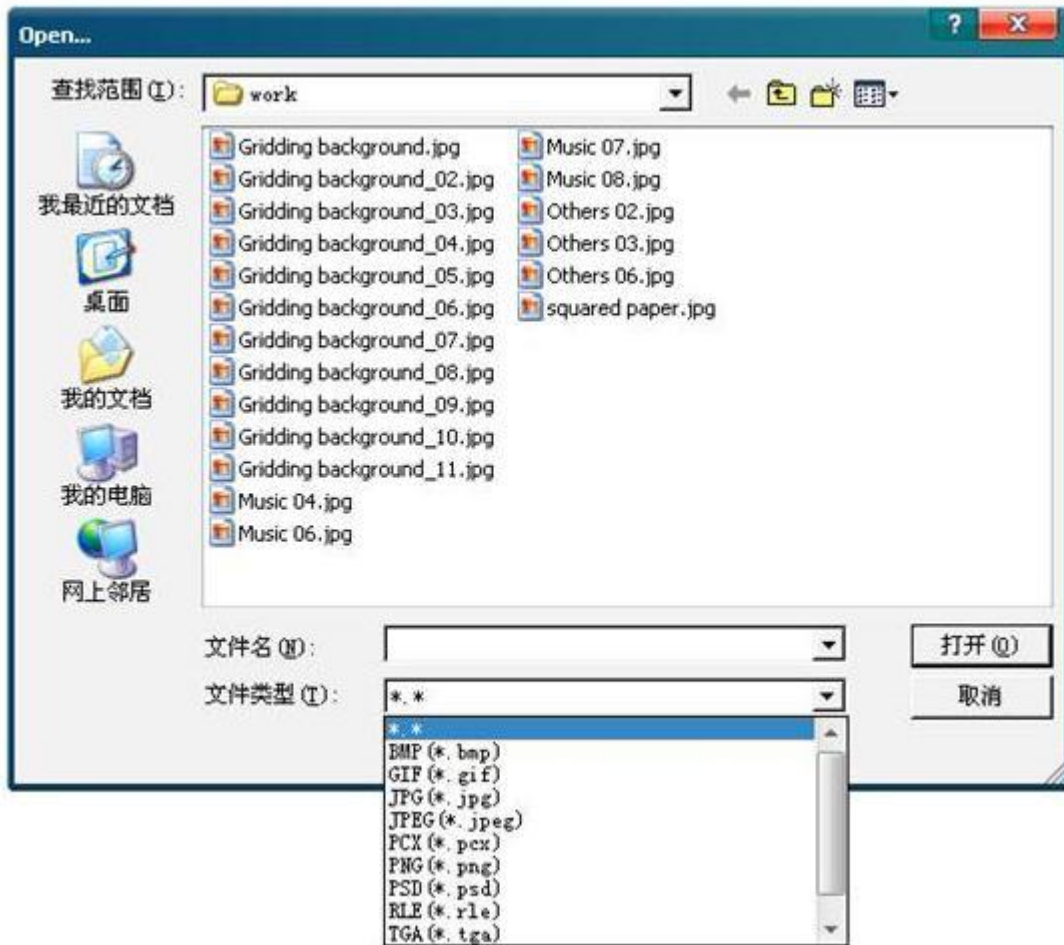
## Resources Manager

**1)New file:** click this button, you can build a new project file

**2)Save file :** click this button,you can save the front page by JPG form ,as follows :



3) **Load file** : click this button, in addition, you can click this button so that the background pictures can be inserted , details as follows :



4) **New page** : click this button, you can set up many pages in one file, and you can choose different background pictures, which enriches the speech and teaching content.

5) **Delete page**: delete the front page

6) **Duplicate page**: copy the last page

7) **Perior / next page** :conduct page turning function

**NOTES**:If you want to exit Resources Manager,you may press the button of “show page” in the expansion function menu.

## **Chapter 4 Frequently Asked Questions**

Q1: Why the software can't be recognized when it is running?

A: When this happens, you can plug the hardware, then re-run the program.

Q 2: why is the pointer position of the mouse not accurate ?

A: If you find the pointer position of the mouse not accurate, you should adjust the receiver position and angle or conduct coordinates sampling again.

Q 3: why isn't there signal in the two angle area at the bottom of the screen?

A: If there is no signal only in the two angle area at the bottom of the whole screen , may be because of too low exposure value, you need to increase the exposure value.

Q 4: Why does the cursor jump significantly?

A: If the cursor jump up and down significantly, please check if the sunshine or other strong light shine one the screen.

Q 5: How to determine whether there is any light interference?

A: Can't conduct coordinates sampling , cursor jumping up and down or discontinuous line may be because of strong light interference or something wrong with the devices. A simple way to determine it : cover the front of the signal receiver, if the indicator stops flashing (may be on may be off), which means nothing wrong with the devices, it is because high-brightness Environment causing light interference; or something is wrong with the devices. if this happens ,please contact the local distributors or our company technology department.

## **Chapter 5 Customers Support**

### **Customers support**

The software is easy to use, which makes you use it not depend on the Manual or other support means. We give the software to the customers with a manual. If you can't find anything you want you can contact local distributors or technology department. General technology can be given by E-mail in the working days from 8:30 to 17:30 except holidays and we will support telephone and online help. Please prepare for the product serial numbers.